

Name: *Cacopsylla mali* (Schmidberger, 1836)

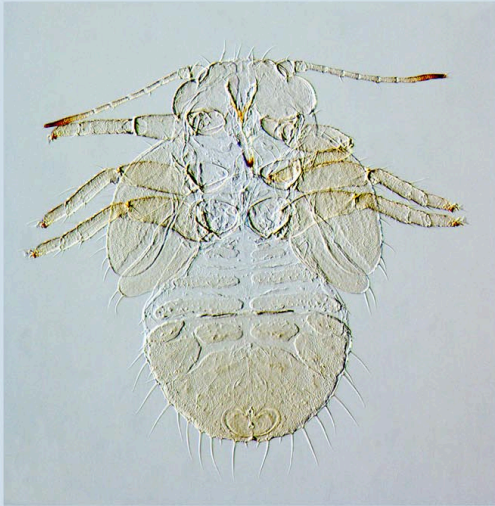
Synonyms: *Chermes mali*; *Psylla mali*; *Cacopsylla (Cacopsylla)*

mali; *Psylla viridis* Hartig, 1841; *Psylla dubia* Foerster, 1848;

Psylla aeruginosa Foerster, 1848; *Psylla crataegicola* Foerster, 1848; *Psylla occulta* Foerster, 1848; *Psylla rubida* Meyer-Dür, 1871; *Psylla claripennis* Meyer-Dür, 1871; *Psylla viridissima* Scott, 1876

Distribution: Armenia, Austria, Azerbaijan, Belgium, Bulgaria, Czech Republic, Denmark, Finland, France, Georgia, Germany, Ireland, Italy, Japan, Kazakhstan, Korea, Moldova, Netherlands, Norway, Poland, Romania, Russia, Slovakia, Slovenia, Spain, Sweden, Switzerland, Turkey, Ukraine, United Kingdom; introduced into the USA, Canada and Australia

Host plants: *Malus domestica*, *M. sylvestris*, *M. pumila*



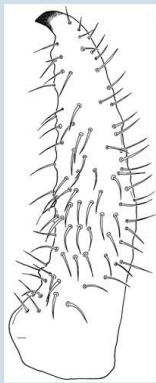
nymph



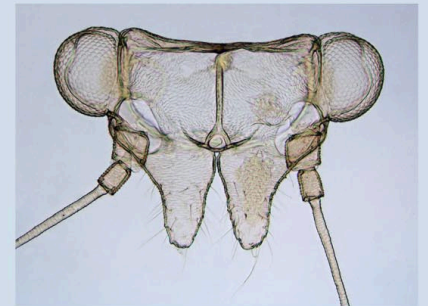
adult (female)



→ distal portion of aedeagus



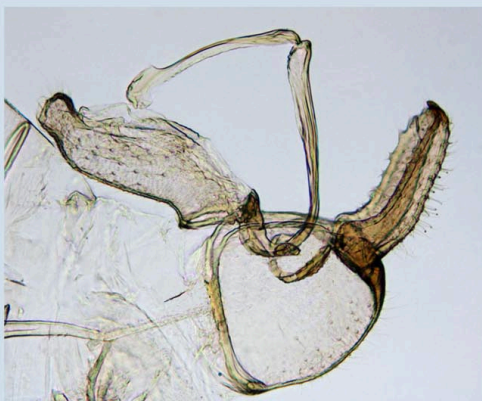
→ paramere



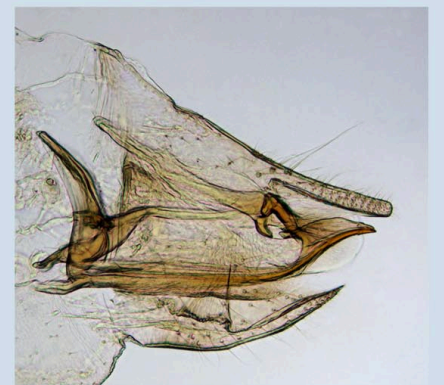
head



forewing



male terminalia



female terminalia